







ACHTUNG!
-30%
-50%
-15%
-50%









TOMRA SYSTEMS ASA
P.O. Box 278, N-1572 Asker, NORWAY

Tomra T-8 BC

240 V ~

50 Hz

55 W idle

285 W max

2.5 A

Weight 200 kg

Serial no. / Machine ID

606657-90368001-60597

Month/Year: 08/2019

Assembled in Norway

Ref: 1-FIN-CE-MOV-SOME V2



For dismantling
instructions see
www.tomra.com/weee

Tomra T-8 BC is designed, manufactured and conforms
compliance, CE, with following EU Directives:

- 2006/42/EC Community Legislation on Machinery, including Electric Safety
- 2014/30/EU Electromagnetic Compatibility
- 2011/65/EU, Restrictions of Hazardous Substances, RoHS

The following harmonized standards have been applied:
EN ISO 12100:2010, EN 60204-1, EN 60335-1,
EN 13857:2008, EN50581:2012,
EMC EN 55022:2010, EN 61000-6-3, EN 61000-6-4,
EN 61000-6-1, EN 61000-6-2.

Suitable for protected locations only. This product
complies with directive 2012/19/EC WEEE.
One or more of the following patents apply:
US pat. no. 5,898,169, 6,012,588, 6,137,900,
7,110,590, 7,245,757, and 7,284,686. Additional
patents pending. Corresponding patents and patent
applications in other countries.

Install and Use Only per Manufacturer's Instructions



TOMRA Leergutssysteme GmbH
Liebermannstraße F3 402
2345 Brunn am Gebirge

CE

Typ: TOMRA Leergutrücknahmesystem

Anlagen-Nr. 231974-01

Baujahr: 2024







Production:
Tomra Systems B.V.
The Netherlands

Sales office:
DHL Logistics (Slovakia) s.r.o
Diaľničná 2
903 01 - Senec
SLOVAKIA

Your order no. - 0699-NLAPE
Our order no. - B49453
Store Nmbr - UN&F_4924_InA1
Delivery date - 11-07-2024
Production date - 09-07-2024

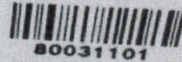


TOMRA

Crate Shelf 1.5 m EP

LAYOUT:

Belt 1. 2440 mm
Belt 2. 4295 mm
Belt 3. mm
Belt 4. mm



80031101

